

Texas Public School Finance

Layers of Knowledge Series

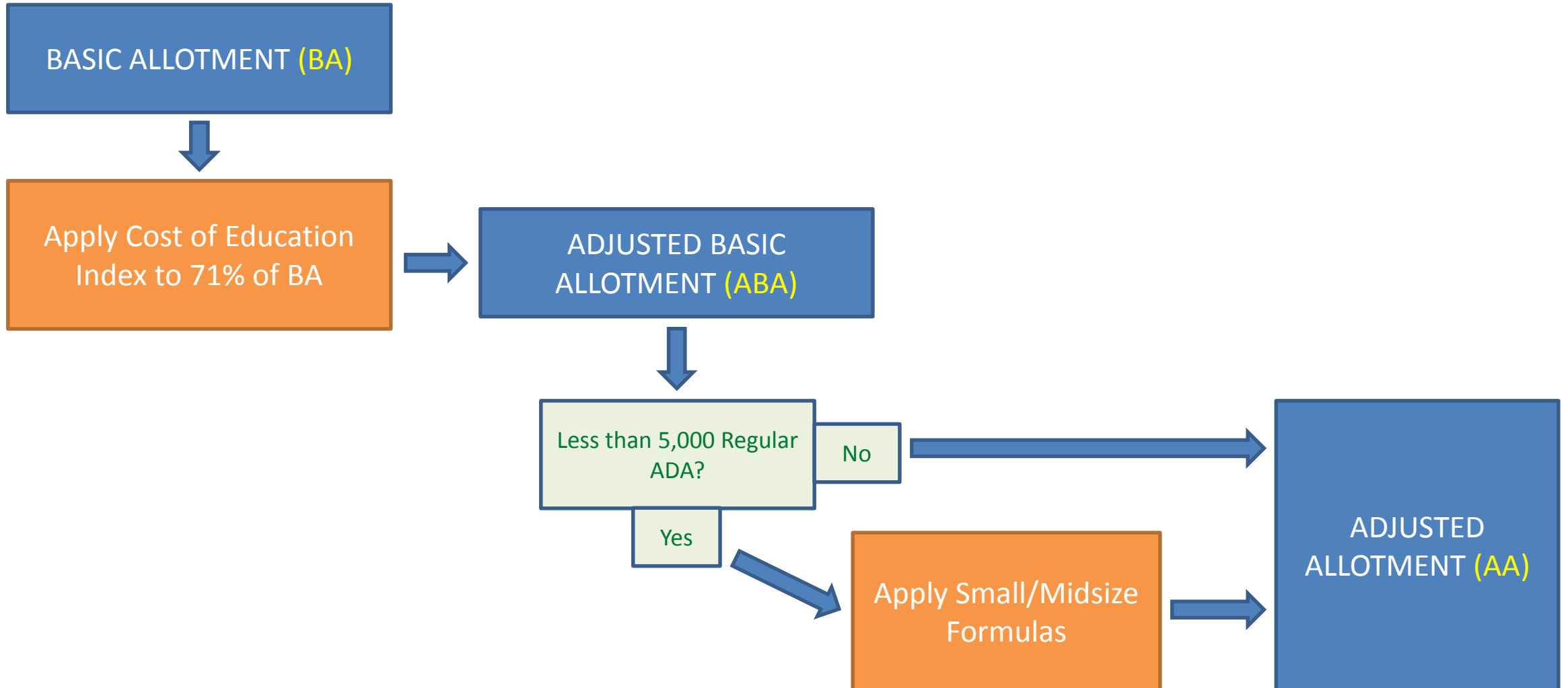
An Equity Center Presentation

SF 6: Calculating the Tier 1

Regular Program Allotment



Basic Allotment to Adjusted Allotment District Adjustments



The Foundation School Program

Tier 1

Regular Program

Special Education

Compensatory Education

Bilingual Education

Career and Technology Education

Transportation

Gifted and Talented

Public Education Grant

New Instructional Facility (NIFA)

High School Allotment

Regular Program Allotment

$$\text{Regular Program Allotment} = \text{Adjusted Allotment (AA)} \times \text{Regular Program ADA}$$

Example: Calculating the Regular Program Allotment

Assumptions

1. Adjusted Allotment (AA) = \$6,000
2. Total Refined Average Daily Attendance (ADA) = 1,200
 - a. Special Education FTEs = 125
 - b. Career & Technology FTEs = 75

Example: Calculating the Regular Program Allotment

Assumptions

1. Adjusted Allotment (AA) = \$6,000
2. Total Refined Average Daily Attendance (ADA) = 1,200
 - a. Special Education FTEs = 125
 - b. Career & Technology FTEs = 75
3. Regular Program ADA = Total ADA – Sp Ed FTEs – C&T FTEs

Example: Calculating the Regular Program Allotment

Assumptions

1. Adjusted Allotment (AA) = \$6,000
2. Total Refined Average Daily Attendance (ADA) = 1,200
 - a. Special Education FTEs = 125
 - b. Career & Technology FTEs = 75
3. Regular Program ADA = Total ADA – Sp Ed FTEs – C&T FTEs
4. $1,200 - 125 - 75 = 1,000$ Regular Program ADA

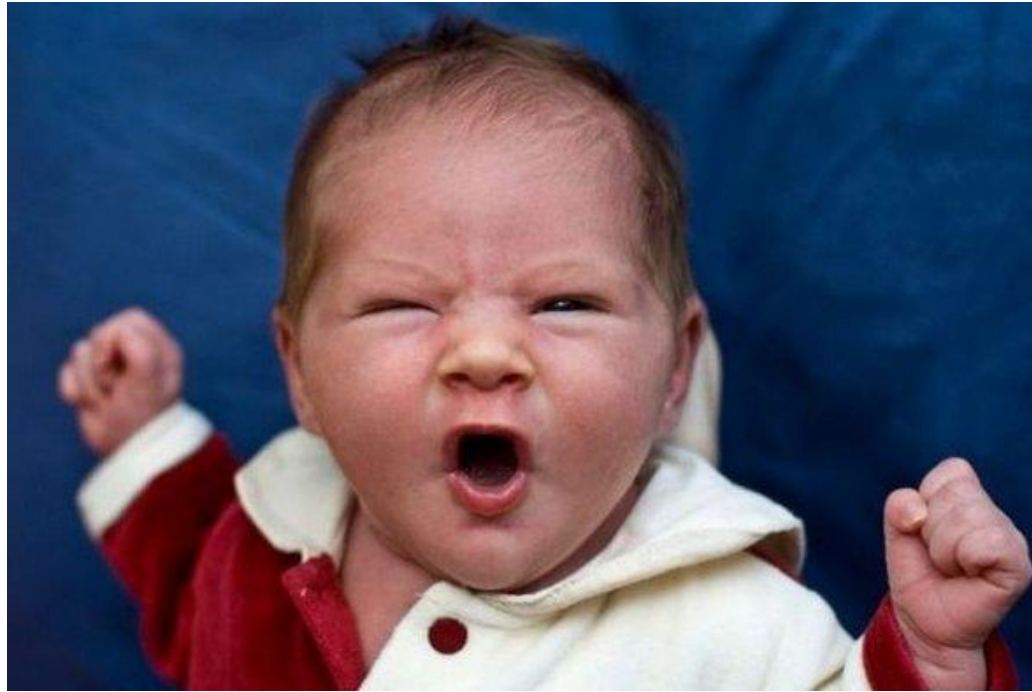
Example: Calculating the Regular Program Allotment

Allotment =

Adjusted Allotment (AA) x Regular ADA

\$6,000 x 1,000

\$6,000,000



Equity Center

Standing Up for Texas Taxpayers and Children